

A TASTE OF **TOMORROW**, TODAY.



WHAT WILL THE TECHNOLOGY OF TOMORROW BE LIKE? IT WILL BE CAPABLE OF IMPROVING AND ENHANCING YOUR EVERY EXPERIENCE. OF OPTIMISING YOUR CAPABILITIES. OF AMPLIFYING YOUR SENSATIONS. OF TRANSFORMING THE ENTIRE WORLD AND BOOSTING SAFETY, ENJOYMENT AND BEAUTY. 500X TECHNOLOGY IS ALREADY CAPABLE OF DELIVERING ALL OF THIS TO GIVE YOU **A TASTE OF TOMORROW, TODAY.**

THE  
NEW  
500X.  
THE  
AUGMEN-  
-TED  
SUV





# AUGMENTED CITY

TOMORROW THERE WILL BE  
A NEW WAY TO BUILD THE CITY.

FOR NOW, THERE IS  
A NEW WAY TO EXPERIENCE IT.

## THE NEW FIAT 500X LOUNGE.

Experience the city of today with the technology of tomorrow on board the New Fiat 500X Lounge. This fully-connected new trim is equipped with new driver assistance systems and ticks every style box to ensure you'll never go unnoticed.



# AUGMENTED NATURE

FROM TODAY,  
FOR THE EXPLORERS OF TOMORROW.

**THE NEW FIAT  
500X CROSS.**

If you have a restless soul, you'll get on just fine with the 500X Cross. Escape from the city and let technology take care of your safety with latest driver-assistance system, amplify your experience and boost your enjoyment. Available in the Cross and City Cross versions.





# AUGMENTED PLEASURE

MAYBE TOMORROW WE COULD FIND A BIONIC PARTNER ATTRACTIVE.

TODAY THERE IS ALREADY A CAR TO BE IRRESISTIBLE.

## THE NEW FIAT 500X SPORT.

It's love at first ride. Curve after curve, while the New 500X Sport seduces the road, you can't help but feel the sporty feeling becoming more and more intense. This is how a quick moment of pleasure can become a long lasting passion.



# AUGMENTED BEAUTY

FINALLY THE CAR THAT LOOKS  
AT THE WORLD THROUGH YOUR EYES.

NEW FULL LED PROJECTORS AND NEW DESIGN

As you might expect from a 500X, this model delivers augmented design with new Full LED Projectors and new rear LED ensuring better visibility, new bumper for better stance, and irresistible new colours. And there are even more new features to discover on top of that.

451215484513 4545  
451215484513225841554454545  
225841554454545





Check out the new design of the vehicle interiors, featuring a new sport cluster and new steering wheel, with alcantara upholstery, that offer unique sporty driving sensations.

The image refers to the dashboard of Sport version with Alcantara® inserts on steering wheel and cluster cover





50 70 90 90

# AUGMENTED INTELLIGENCE

WHAT WOULD A CAR THAT CAN  
READ BE LIKE? EXACTLY LIKE THIS.

NEW DRIVING TECHNOLOGY.

The best technology speaks our language. And from today, it can read it too. The 500X features advanced driver assistance systems ensuring that everything is under control at all times. For instance, it can recognise the main road signs, such as speed limits, and notify the driver - all in real time.



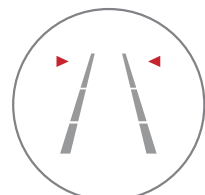
### TRAFFIC SIGN RECOGNITION AND SPEED ADVISOR

The system detects and recognizes traffic signs and displays them on the TFT cluster. With speed limiter active it's also possible to limit the car's speed to the maximum allowed level read by the Traffic Sign Recognition system.



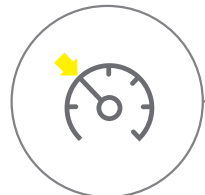
### AUTONOMOUS EMERGENCY BRAKE

The system detects the speed of the vehicle in front in relation to the Fiat 500X and will advise the driver if they are approaching too fast and therefore there is a risk of collision. Should the driver not intervene, the system automatically activates braking to avoid the impact or mitigate its effects. The brake control operates down to 7km/h and provides audible and visible warnings.



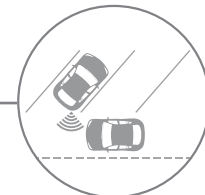
### LANE ASSIST

Utilizes a camera-based machine vision sensor to detect and measure the position of the vehicle within lane boundaries. During an unintentional lane drift with no turn signal applied, the system will provide a visual indication on the instrument panel accompanied by greater resistance of the steering in order to bring the car back into lane limits.



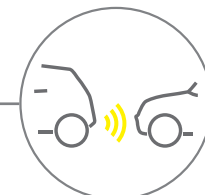
### SAFETY DISTANCE MANAGER (ACC)

Using a radar sensor, the system detects vehicles in its path and maintains the vehicle at a set speed. It operates from 30-km/h. If slower traffic is detected, the system will automatically adjust to a safe distance, pre-selected by the driver.



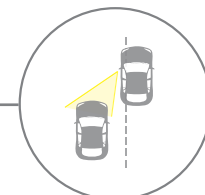
### REAR CROSS PATH DETECTION

Helps to monitor vehicles and objects in blind areas whilst the Fiat 500X is in reverse gear. If a vehicle is approaching from the side, it provides feedback to the driver via audible chimes and a light signal on the door mirror.



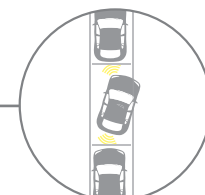
### REAR VIEW CAMERA

The rear camera helps to park the car and to manage difficult operations. The image is projected with dynamic grid lines and a center line graphic that adjusts guide paths as the steering wheel is turned.



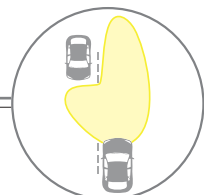
### BLIND SPOT ALERT

It continually monitors the presence of vehicles in 'blind spots' and advises the driver through a light signal on the door mirrors.



### FRONT AND REAR PARKING SENSOR

The front and rear parking sensor's acoustic signal warns you when you're approaching a hidden obstacle during parking and reversing manoeuvres.



### ADAPTIVE HIGH-BEAM

Makes nighttime driving safer by providing the maximum amount of light possible for any driving scenario. This system switches headlamps from high to low-beam when incoming headlamps or forward lighting elements are sensed and back again from low- to high-beam when those conditions expire.



# AUGMENTED EFFICIENCY

ONE DAY WE MIGHT FIND  
NEW HABITABLE PLANETS.

**IN THE MEANTIME,  
LET'S TAKE CARE OF OURS.**

NEW EFFICIENT PETROL  
TURBO ENGINE.

The 500X is focused on a more sustainable future. That's why we're already offering a wide range of hi-tech engines. A stand-out engine type currently available offer lower consumption, better performance, higher acceleration and driving comfort benchmark in its class.





A brand-new family of petrol turbo engines is here, designed to achieve the excellence and to become benchmark in their category. While reducing fuel consumption they're able to increase fun to drive, thanks to low-end-torque. Moreover outstanding acoustic comfort is guaranteed, no matter what speed you are travelling at. These new engines are able to satisfy any needs: the New FireFly Turbo 1,0 is dedicated to urban use, with an instant torque for high responsiveness, enjoyable feeling of acceleration and acoustic comfort; the New FireFly Turbo 1,3 DCT, dedicated to those who seek excellent performance. Available in the range also the consolidated and efficient MultiJet diesel engine family which becomes cleaner thanks to the adoption of the SCR integrated in the DPF and includes the 1.6 120 HP, available with manual or automatic dual clutch transmission.

	New FireFly Turbo 1,0 120 HP (B*)	New FireFly Turbo 1,3 150 HP DCT (B*)	1,3 MultiJet II 95 HP (B*)	1,6 MultiJet II 120 HP (B*)	1,6 MultiJet II 120 HP DCT (B*)
Displacement (cm <sup>3</sup> )	999	1332	1248	1598	1598
Max. power kW (HP) at rpm	88 kW (120) @ 5750	110 kW (150) @ 5500	70 kW (95) @ 3750	88 kW (120) @ 3750	88 kW (120) @ 3750
Max. torque Nm (kgm) at rpm	190 Nm @ 1750	270 Nm @ 1850	200 Nm @ 1500	320 Nm @ 1750	320 Nm @ 1750
Transmission	6 speed manual	6 speed automatic dual clutch	5 speed manual	6 speed manual	6 speed automatic dual clutch
Drive	front wheel drive	front wheel drive	front wheel drive	front wheel drive	front wheel drive
Acceleration 0-100 km/h (s)	10.9	9.1	13.5	10.7	10.7
Top speed (km/h)	188	200	172	186	186
Supply	gasoline, direct injection	gasoline, direct injection	Diesel, direct injection Common-Rail with MultiJet II system, turbocharger and intercooler	Diesel, direct injection Common-Rail with MultiJet II system, turbocharger and intercooler	Diesel, direct injection Common-Rail with MultiJet II system, turbocharger and intercooler
Ignition	electronic, static, integrated with injection	electronic, static, integrated with injection	by Compression	by Compression	by Compression
Start&Stop System	yes	yes	yes	yes	yes
Urban cycle consumption (litres/100 km) max/min	6.8/6.3	7.5/6.9	5.1 /4.9	5.6 /5.5	5.4
Extra-urban cycle consumption (litres/100 km) max/min	5.1/4.7	5.2/4.9	3.7/3.5	4.0/3.7	4.4/3.8
Combined cycle consumption (litres/100 km) max/min	5.8/5.4	5.7/5.6	4.3/4.0	4.7/4.3	4.7/4.4
CO <sub>2</sub> emissions (g/km) max/min	132/122	138/128	111/106	123/115	124/116
Ecology Level	Euro 6d-TEMP	Euro 6d-TEMP	Euro 6d-TEMP	Euro 6d-TEMP	Euro 6d-TEMP

\* The specification (B) indicates the value of CO<sub>2</sub> and fuel consumption determined on the basis of the measurement / correlation method referring to the NEDC2 cycle as per Regulation (EU) 2017/1152-1153. The CO<sub>2</sub> and fuel consumption values obtained according to applicable regulation are indicated in order to allow the comparison of vehicle data. The homologation values of CO<sub>2</sub> and fuel consumption may not reflect the actual values of CO<sub>2</sub> and fuel consumption, which depend on many factors related, by way of example but not limitation, to the driving style, the route, the weather and road conditions, the condition, use and equipment of the vehicle. The indicated value of CO<sub>2</sub> and fuel consumption refers to the versions of the vehicle with the highest and the lowest values. Those values may change with the subsequent configuration depending on equipment selected and/or size of tires selected. The indicated values of CO<sub>2</sub> and fuel consumption are not definitive and may evolve as a result of changes in the production cycle; more up-to-date values will be available at the selected official dealer of the FCA network. In any case, the official values of CO<sub>2</sub> and fuel consumption of the vehicle purchased by the customer will be provided with the documents accompanying the vehicle. In cases where the values of CO<sub>2</sub> and fuel consumption are relevant for the purposes of calculating taxes and duties related to the vehicle, reference should be made to the applicable laws in each country.



# AUGMENTED CONNECTIVITY

TODAY IN CONTACT WITH YOUR WORLD.  
TOMORROW WITH THE UNIVERSE.

Boost your connectivity and ensure you stay at the centre of the action with Apple CarPlay® Integration. By linking your iPhone to your new 500X, you'll simplify your driving experience thanks to the Uconnect™ 7" HD LIVE touchscreen, now available across all trim levels.



To enjoy Apple CarPlay\* connect your iPhone to the specific USB port in your car.

\* Apple CarPlay® is a trademark of Apple Inc. Use of the Apple CarPlay® logo means that a vehicle user interface meets Apple performance standards. Apple is not responsible for the operation of this vehicle or its compliance with safety and regulatory standards. Please note that the use of this product with iPhone, iPod, or iPad may affect wireless performance.





To use Android Auto™ on your phone screen, you'll need an Android phone running 5.0 (Lollipop) or higher and the Android Auto™.

\* Android and Android Auto are trademarks of Google LLC.



**UCONNECT™ HD LIVE DAB**



**UCONNECT™ HD NAV LIVE DAB**

## ADVANCED CONNECTIVITY SYSTEMS AND INFOTAINMENT.

The 7" Uconnect™ System, with Apple CarPlay® and Android Auto™ integration, is equipped with a 7" high resolution touchscreen display with capacitive technology. Available Uconnect™ LIVE services (TuneIn, Reuters, Twitter, Facebook, Deezer, my:Car e eco:Drive) and two additional speakers.

The Uconnect™ 7" HD Nav LIVE system is equipped with TomTom, to be constantly updated on traffic and weather conditions and detects in real time the presence of speed cameras or accidents on your way. With Apple CarPlay® e Android Auto™ integration and function DAB (Digital Audio Broadcasting).



**UCONNECT™ RADIO DAB**

Uconnect™ Radio with Bluetooth®, Aux and USB is the gateway to the Uconnect™ world. It is fully integrated in the dashboard of the car and provided with controls on the steering wheel. The Bluetooth® (Hands-free profile) interface allows you to make and receive calls, to listen to and send text messages and to play music all on your mobile phone.



**BEATS AUDIO HI-FI SYSTEM.**

On board the Fiat 500X it's easy to enhance your mood and enjoy your favourite music wherever you're going with the Beats Audio Hi-Fi system. Thanks to its 9 speakers and amplifier with more than 500 watts of power, it offers clean and high-fidelity audio response at any volume.

# AUGMENTED IDENTITY

# URBAN

Even at the center of a crowded city, the new 500X can get noticed thanks to its new features that make its style even more 500.



16" alloy wheels (Opt. 404)  
Body color mirror caps (Opt. 976)  
LED DRL (Opt. 9U5)

# 500X URBAN

## MAIN STANDARD EQUIPMENT

### EXTERIOR

- 16" steel wheels
- External heated door mirrors black glossy painted
- Door handles and chrome external details

### INTERIOR

- Dedicated upholstery
- Body color dashboard
- Steering wheel with audio controls
- Manual air conditioning system

### TECHNOLOGY AND SAFETY

- Uconnect™ Radio DAB with Bluetooth® and USB with 4 speakers
- Cluster with 3,5" TFT digital display
- Traffic sign recognition and Speed Advisor
- Electric parking brake
- Lane assist
- Cruise Control with Speed limiter



Uconnect™ 7" HD LIVE touchscreen radio available as optional



# LOUNGE

The 500X Lounge is truly a metro-chic: stylish and well-equipped, it's the perfect car for the city. With its rear and front parking sensors, the front armrest as standard, and the quality and attention to details, every street you take, even the most anonymous, immediately acquires an unmistakable allure.



18" Alloy wheels (Opt. 55E)  
Bicolour paint available as optional

# 500X LOUNGE

## MAIN STANDARD EQUIPMENT



### EXTERIOR

- DRL (day running light) with LED technology to improve visibility and efficiency
- 16" alloy wheels
- Body colour external mirror caps
- Door handles and chrome external details

### INTERIOR

- Body color dashboard
- Techno-leather steering wheel with audio controls
- Height adjustable driver seat
- Manual air conditioning system
- Front armrest

### TECHNOLOGY AND SAFETY

- Uconnect™ 7" HD LIVE touchscreen radio with Apple CarPlay®/Android Auto™ integration with 6 speakers
- Cluster with 3,5" TFT digital display
- Front and rear parking sensors
- Dusk and rain sensors
- Traffic sign recognition and Speed Advisor
- Electric parking brake
- Lane assist
- Cruise Control with Speed limiter

# CITY CROSS

Combining a spirit of adventure with a love for the city, the 500X City Cross is the ideal car for anyone wishing to show off their outdoor style as they cruise the urban streets.



Full LED projectors (Opt. LM6)  
Satin aluminium finished skid plates (Opt. 409)  
17" Alloy wheels (Opt. 4AV)  
Full Chrome DLO (Opt. 4MQ)

# 500X CITY CROSS

## MAIN STANDARD EQUIPMENT



### EXTERIOR

- Front and rear bumpers with integrated skid plates
- DRL (day running light) and rear projectors with LED technology to improve visibility and efficiency
- Fog lights
- Body colour external mirror
- Satin chrome door handles and external details
- 16" alloy wheels

### INTERIOR

- Two dedicated upholsteries
- Body color dashboard
- Techno-leather steering wheel with audio controls
- Manual air conditioning system
- Height adjustable driver seat

### TECHNOLOGY AND SAFETY

- Uconnect™ 7" HD LIVE touchscreen radio with Apple CarPlay®/Android Auto™ integration with 6 speakers
- Cluster with 3,5" TFT digital display
- Traffic sign recognition and Speed Advisor
- Electric parking brake
- Lane assist
- Cruise Control with Speed limiter





# CROSS

With its distinctive look and bold personality, the 500X Cross is the ideal SUV for anyone who loves to make a stylish escape from city life. Well equipped with the new 19" alloy wheels that give the car even more character.

Aluminium finished skid plates (Opt. 409)  
Satin aluminium finished roof rails (Opt. 0MV)  
19" Alloy wheels (Opt. 73Z)  
Full Chrome DLO (Opt. 4MQ)  
Privacy tinted glass (Opt. 070)

# 500X CROSS

## MAIN STANDARD EQUIPMENT



### EXTERIOR

- Front and rear bumpers with integrated skid plates
- Roof rails
- DRL (day running light) and rear projectors with LED technology to improve visibility and efficiency
- Fog lights
- Body colour external mirror
- Satin chrome door handles and external details
- 19" high efficiency alloy wheels

### TECHNOLOGY AND SAFETY

- Uconnect™ 7" HD LIVE touchscreen radio with Apple CarPlay®/Android Auto™ integration with 6 speakers
- Cluster with 3,5" TFT digital display
- Rear view camera
- Rear Parking sensors
- Dusk Sensors
- Traffic sign recognition and Speed Advisor
- Electric parking brake
- Lane assist
- Cruise Control with Speed limiter

### INTERIOR

- Two dedicated upholsteries
- Body color dashboard
- Techno-leather steering wheel with audio controls
- Automatic air conditioning
- Height adjustable driver seat
- Courtesy lights on sun visors

# SPORT

The lowered ride height of 13 mm, the 19" alloy wheels with performance tires combined with specific suspension and steering wheel tuning (only on 1.3 FireFly T4 engine): all these characteristics give the 500X an exceptional grip and optimal handling on the street, an improved safety, a maximum fun to drive combined with a sporty look.



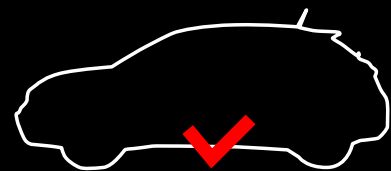
19" Alloy wheels (Opt. 6Y8)

# 500X SPORT

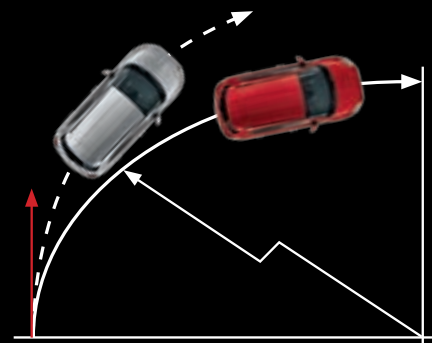
## MAIN STANDARD EQUIPMENT

### EXTERIOR

- Full LED Headlights
- Full LED Fog lamps
- Specific lowered ride height
- Specific front and rear bumpers with Titanium finished inserts
- Body colour side skirts and wheel arch moldings
- 18" sporty alloy wheels
- Dual chrome exhaust
- Privacy glass
- Titanium finished details on front bumper, front molding and door handles
- Titanium finished mirror caps
- "Sport" badge on fender



LOWERED RIDE HEIGHT  
-13 mm ride height vs. Urban and Cross body

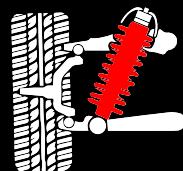


### INTERIOR

- Dedicated sporty dark upholstery
- Titanium finished dashboard with 500 Myron logo
- Specific techno-leather steering wheel with audio controls and Myron details
- Dark headliner and pillars
- Automatic air conditioning
- Specific aluminum shift knob on manual gearbox
- Height adjustable driver seat
- Courtesy lights on sun visors



NEW 19" TIRES  
Dedicated 19" tires 225/40 R19 with Sporty performances (OPT)



SPECIFIC SUSPENSIONS  
New front and rear springs  
Dedicated shock absorber tuning (only on 1,3 FireFly Turbo 150hp DCT)



STEERING WHEEL SET-UP  
(only on 1,3 FireFly Turbo 150hp DCT)

### TECHNOLOGY AND SAFETY

- Uconnect™ 7" HD LIVE touchscreen radio with Apple CarPlay®/Android Auto™ integration with 6 speakers
- Specific cluster with 3,5" TFT digital coloured display
- Rear Parking sensors
- Dusk Sensors
- Traffic sign recognition and Speed Advisor
- Electric parking brake
- Lane assist
- Cruise Control with Speed limiter



Greater agility in curve entry and improved cornering grip\*

\* On 500X Sport 1,3 FireFly Turbo 150hp DCT with 19" alloy wheels with performance tyres





# AUGMENTED STYLE

Communicative and original. The new 500X loves to express itself with 27 different colours:

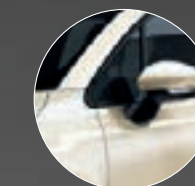
- new 12 bicolours
- 1 tricoat
- 7 metallic
- 5 pastel
- 2 matt



Body colour dashboard is standard on: URBAN/LOUNGE/CITY CROSS/CROSS. Titanium finished dashboard is standard on SPORT

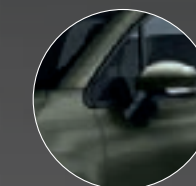
## BODY COLOURS

### TRICOAT

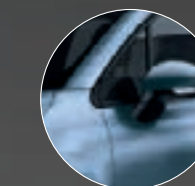


020 PERLA WHITE\*

### MATT METALLIC



149 ALPI GREEN

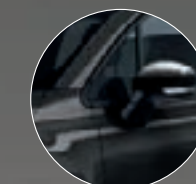


994 JEANS BLUE

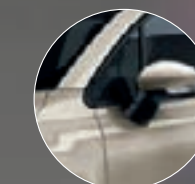
### PASTEL



296 GELATO WHITE\*



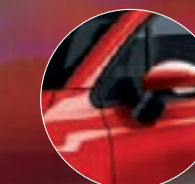
601 CINEMA BLACK



231 CAPPUCCINO BEIGE\*



289 PASSIONE RED\*

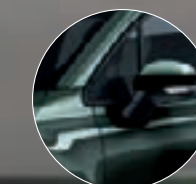


176 SEDUZIONE RED\*

### METALLIC



018 ITALIA BLUE\*



019 TECHNO GREEN\*



348 ARGENTO GREY\*



679 MODA GREY\*



731 JEANS BLUE\*



888 VENEZIA BLUE\*



942 AMORE RED\*

\* Available also bicolour with black roof

# WHEELS



128 - 16"  
Glossy silver hub cup  
(Standard on Urban)



404 - 16"  
Glossy silver alloy wheel  
(Standard on City Cross,  
optional on Urban)



1LR - 16"  
Black alloy wheel  
(Standard on Lounge)



431 - 17"  
Glossy silver alloy wheel  
(Optional on Lounge)



4AV - 17"  
Black machined  
alloy wheel  
(Optional on City Cross - Cross)



7PN - 17"  
Black machined  
alloy wheel  
(Optional on Sport)



56J - 18"  
Black machined  
alloy wheel  
(Optional on City Cross - Cross)



55E - 18"  
Matt silver alloy wheel  
(Optional on Lounge)



73Z - 19"  
Black machined alloy wheel  
(Standard on Cross,  
optional on Lounge - City  
Cross)



6U4 - 18"  
Black machined alloy wheel  
(Standard on Sport)



6Y8 - 19"  
Black machined alloy wheel  
(Optional on Sport)

# INTERIORS



Black denim fabric, black  
techno-leather head restraints  
and upper-part with 500 logo  
insert and piping in vinyl with  
black/light grey stripes

**500X**  
025 URBAN



Grey Canvas fabric 3D quilted,  
ivory grained techno-leather  
head restraints and upper-part  
with 500 logo insert in grey  
vinyl and ivory piping

**500X**  
580 CITY CROSS



Grey Canvas fabric 3D quilted,  
black grained techno-leather  
head restraints and upper-  
part with 500 logo insert and  
piping in ivory vinyl

**500X**  
035 CITY CROSS



Black/Copper revisited pinstripe  
fabric, black grained eco-leather  
head restraints and upper-part  
with embroidered 500 logo and  
Saffiano vinyl piping in metallic  
Copper colour

**500X**  
064 LOUNGE  
049 CROSS



Grey Canvas fabric 3D quilted,  
black grained techno-leather  
head restraints and upper-  
part with 500 logo insert and  
piping in ivory vinyl

**500X**  
042 CROSS



Black arrow fabric seats  
with techno-leather inserts,  
500 silver logo and piping  
in Red/Grey

**500X**  
073 SPORT



Punched black leather, with  
techno-leather inserts, upper-part  
with 500 embroidered logo  
and ivory piping

**500X**  
688 LOUNGE  
497 CITY CROSS  
539 CROSS



Punched Corniola leather, with  
techno-leather inserts, upper-part  
with 500 embroidered logo and  
grey piping

**500X**  
703 LOUNGE  
563 CITY CROSS  
564 CROSS



Punched black leather, with  
techno-leather inserts, upper-part  
with 500 embroidered logo  
and grey piping

**500X**  
484 SPORT



# PACKS

500X is unique, and your chosen Fiat 500X has to be unique as well. Thanks to the optional packs, customisation knows no limits: unique content that enhances the exclusivity of the Fiat 500X still further. Because exclusivity is not an option.

## WINTER

- Heated front seats
- Heated windshield

URBAN  
LOUNGE  
CITY CROSS  
CROSS  
SPORT

## COMFORT

- Front Armrest
- Third rear headrest
- Cargo Floor
- Front and rear mats
- Driver's seat with lumbar adjustment
- Hooks for net storage

URBAN  
LOUNGE  
CITY CROSS  
CROSS  
SPORT

## ELECTRIC COMFORT

- Front Armrest
- Third rear headrest
- Cargo Floor
- Front and rear mats
- Power driver seat 8 way + 4 way lumbar
- Power front passenger seat
- Hooks for net storage

CROSS  
SPORT

## FULL LED HEADLIGHTS

- FULL LED lights
- Puddle lights
- Ambient Light
- LED fog lamps

LOUNGE  
CITY CROSS  
CROSS

## X-TECH

- Passive entry + keyless go
- Auto power foldable mirrors
- Automatic A/C - 2 zones
- Electrochromic int. Mirror
- Courtesy lights on sunvisors

LOUNGE  
CITY CROSS  
CROSS  
SPORT

## MAGIC EYE

- Rear View Camera
- Front Parking Sensor

CITY CROSS  
SPORT

## MAGIC EYE & SAFETY

- Rear View Camera
- Front Parking Sensor
- Autonomous Emergency Brake
- Auto high beam
- Adaptive cruise control (ACC)

CITY CROSS  
CROSS  
SPORT

## MAGIC EYE & SAFETY PLUS

- Rear View Camera
- Front Parking Sensor
- Autonomous Emergency Brake
- Auto high beam
- Adaptive cruise control (ACC)
- Blind spot detection

CITY CROSS  
CROSS  
SPORT

## STYLE

- Privacy tinted glass
- Full Chrome DLO
- Door Sills

LOUNGE  
CITY CROSS  
CROSS

## BAD S

- Alcantara® Steering wheel inserts & cluster cover
- Aluminium pedals cover + footrest
- Puddle lights
- Ambient Light

SPORT



484513 4545  
5484513225841554454545  
1554454545



Silver Pack Full by Mopar.

# AUGMENTED UNIQUENESS



Even more exclusive. Even more in sync with your lifestyle. The new 500X offers a huge range of original accessories and customisation options developed by Mopar®, so you can concentrate on simply being yourself. With the Fiat 500X, it's easy to follow your passions.

SILVER PACK FULL  
by MOPAR® (Opt. 1AP)



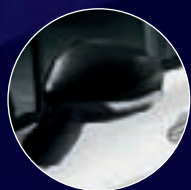
SILVER PACK LIGHT BY MOPAR® (Opt. 9WJ)



COLOURED XTRA PACK by MOPAR®  
(RED Opt. 9WG)\* - (WHITE Opt. 9WH)\*\*



BLACK MIRROR COVERS (Opt. 7JN)



Customisations

For a splash more colour, there are 2 Xtra packs available (Red and White) comprising external mirror covers, side finishings which perfectly match the exclusive 18" alloy wheel rims (sold separately). The Silver packs full are available for those who prefer a sleeker, chromed look.

Carrying system line

Attractive and functional, the Fiat 500X has a wide range of systems for transporting sports equipment for bikes, skis and snowboards, as well as lots of accessories designed to make the best use of the luggage compartment with guards, nets and organisers.

And, for greater comfort, the Fiat 500X offers you two packs dedicated to leisure: Summer and Winter Xtra packs, combining a bike rack or a ski rack respectively with the luggage compartment protection.

Alloy wheels

To transform your car into an exclusive item, MOPAR® has designed a range of 18" alloy wheel dedicated to the 500X, available in 5 exclusive finishes.

500X VERSION AND BODY COLOURS COMBINATIONS WITH OPTIONAL BY MOPAR®

OPT	PACK NAME	CONTENT DESCRIPTION	SINGLE OPT	LOUNGE	CITY CROSS	CROSS	CAPPUCCINO BEIGE	GELATO WHITE	CINEMA BLACK	PASSIONE RED	ITALIA BLUE	TECHNO GREEN	ARGENTO GREY	MODA GREY	VENEZIA BLUE	ALPI GREEN	JEANS BLUE	JEANS BLUE MATT	PERLA WHITE	AMORE RED	
1AP	Silver pack full by Mopar®	Chromed mirror caps	5C6																		
		Chrome side finishing	58H	•	-	-	•	•	•	•	•	•	•	•	•	•	•	•	•	•	•
		Chromed bonnet line	7UU																		
9WJ	Silver pack light by Mopar®	Chromed mirror caps	5C6																		
		Chrome side finishing	58H	•	-	-	•	•	•	•	•	•	•	•	•	•	•	•	•	•	•
9WG	Red Xtra pack by Mopar®	Red mirror caps	5J8	•	•	•															
		Red side finishing	5D6				•	•	-	•	•	•	•	•	-	•	-	-	-	-	
9WH	White Xtra pack by Mopar®	White mirror caps	5J9	•	•	•															
		White side finishing	5G1				•	-	•	•	•	•	-	•	•	•	•	•	•	•	

• Optional  
- not available

\* RED XTRA PACK (Red external mirror caps, side finishing + red decals on bonnet and roof).  
\*\* WHITE XTRA PACK (White external mirror caps, side finishing + white decals on bonnet and roof).

# STANDARD AND OPTIONAL EQUIPMENT

LINE AND STYLE		Urban	Lounge	City Cross	Cross	Sport
Steering wheel in techno-leather		-	■	■	■	■
Spoiler		■	■	■	■	■
Tft 3,5" b/w display	JAY	■	■	■	■	-
Body colour dashboard fascia	JEG	■	■	■	■	-
Body colour mirror caps	976	○	■	■	■	-
Black painted mirror caps	4YD	■	-	-	-	-
Satin chrome door handles, front molding, tailgate handle	5AY	-	-	■	■	-
TFT 3,5" color display	710	-	○	○	○	■
Privacy tinted glass	070	-	○	○	○	■
Leather seats	211	-	□	□	□	□
Titanium grey roof rails	375	-	-	-	■	-
Satin aluminium finished roof rails	0MV	-	-	○	○	-
Titanium grey skid plates	9YB	-	-	■	■	-
Satin aluminium finished skid plates	409	-	-	○	○	-
Sunroof with electrical drive	400	-	○	○	○	○
Full chrome DLO	4MQ	-	○	○	○	-
Puddle lights	9Z3	-	○	○	○	○
Front & rear floor mats	CLE	○	○	○	○	○
Passione Red	7AZ	○	○	○	○	-
Gelato White	5CA	○	○	○	○	○
Cinema Black	5CK	○	○	○	○	○
Cappuccino Beige	5DM	○	○	○	○	-
Seduzione Red	5CF	-	-	-	-	○
Argento Grey	5DN	○	○	○	○	-
Venezia Blue	5DP	-	○	○	○	-
Jeans Blue	5DR	-	○	○	○	-
Moda Grey	5DT	○	○	○	○	○
Italia Blue	5CC	-	○	○	○	○
Techno Green	61Q	-	○	○	○	-
Amore Red	61P	-	○	○	○	-
Perla White	6FX	-	○	○	○	-
Alpi Green	8CZ	-	○	○	○	-
Jeans Blue Matt	5JQ	-	○	○	○	-
Gelato White*	0PY	-	○	○	○	○
Argento Grey*	0Q1	-	○	○	○	-
Perla*	0SB	-	○	○	○	-
Passione Red*	6FW	-	○	○	○	-
Cappuccino Beige*	74G	-	○	○	○	-
Seduzione Red*	5CG	-	-	-	-	○
Venezia Blue*	5CH	-	○	○	○	-
Jeans Blue*	5CJ	-	○	○	○	-

\* with black roof

□ = available in a pack ■ = standard ○ = optional - = not available

LINE AND STYLE		Urban	Lounge	City Cross	Cross	Sport
Moda Grey*	5CL	-	○	○	○	○
Italia Blue*	4SA	-	○	○	○	○
Techno Green*	10N	-	○	○	○	-
Amore Red - extra series*	74F	-	○	○	○	-
16" Steel wheels with glossy silver hub cups	128	■	-	-	-	-
16" Glossy silver alloy wheels	404	○	-	■	-	-
16" Black alloy wheels	1LR	-	■	-	-	-
17" Glossy silver alloy wheels	431	-	○	-	-	-
17" Black machined alloy wheels	4AV	-	-	○	○	-
17" Black machined alloy wheels	7PN	-	-	-	-	○
18" Glossy silver alloy wheels	55E	-	○	-	-	-
18" Black machined alloy wheels	56J	-	-	○	○	-
18" Black machined alloy wheels	6U4	-	-	-	-	■
19" Black machined alloy wheels	6Y8	-	-	-	-	○
19" Black machined alloy wheels	73Z	-	○	○	■	-
<b>COMFORT / FUNCTIONALITY</b>						
Rear power windows - fr auto up/down - rr auto down		■	■	■	■	■
Manual air conditioning		■	■	■	-	-
Electric parking brake		■	■	■	■	■
External rearview mirrors with electrical drive and defrost	041	■	■	■	■	■
Door unlocking / locking by remote control		■	■	■	■	■
Hill Holder		■	■	■	■	■
Electric servo-assisted steering		■	■	■	■	■
Cruise control		■	■	■	■	■
Driver seat with height adjustment	450	○	■	■	■	■
Split rear seat		■	■	■	■	■
Tire filling / repair kit (fix & go)		■	■	■	■	■
Steering wheel with remote controls (cruise control, audio Bluetooth®, voice recognition)		■	■	■	■	■
Stop&start (S&S)		■	■	■	■	■
12V current outlet		■	■	■	■	■
Door sills	018	○	○	○	○	○
Automatic headlight activation (dusk/down)	051	○	■	○	■	○
Front sliding armrest	132	○	■	○	○	○
Automatic dual-zone climate control	140	-	○	○	■	■
Cargo floor	256	-	○	○	○	○
External mirrors with automatic drive folding	341	-	○	○	○	○
Active Rear view Mirror	410	○	○	○	○	○
Safety Distance Manager	412	-	-	□	□	□
Heated front seats	452	○	○	○	○	○
Passenger seat with height adjustment	454	○	○	○	○	○

\* with black roof

□ = available in a pack ■ = standard ○ = optional - = not available

<b>COMFORT / FUNCTIONALITY</b>		Urban	Lounge	City Cross	Cross	Sport
Power driver seat 8 way + 4 way lumbar	JPR	□	□	□	□	□
Power front passenger seat 8 way + 4 way lumbar	4GQ	□	□	□	□	□
Paddle shifts on steering	4WE	-	○	○	○	○
Driver seat with lombar adjustment with electrical drive	623	-	○	○	○	○
Hooks for net storage (cargo compartment)	734	○	○	○	○	○
Undersized spare tire	803	○	○	○	○	○
Full size spare tire	980	○	○	○	○	○
Smoking kit	989	○	○	○	○	○
Courtesy lights on sun visors	GNC	-	○	○	■	■
Passive entry + keyless go	GXD	-	○	○	○	○
<b>SAFETY</b>						
Lane Assist / Traffic sign recognition / Speed Advisor		■	■	■	■	■
Driver front airbag		■	■	■	■	■
Passenger front airbag		■	■	■	■	■
Front seats side airbags		■	■	■	■	■
Front and rear side-curtains airbags		■	■	■	■	■
Tyre Pressure Monitoring System		■	■	■	■	■
Front fog lamps with cornering		-	-	■	■	■
Front parking sensor	07N	-	■	○	○	○
Rear View Camera	316	-	○	○	■	○
Rear park sensor	508	○	■	○	■	■
Rain sensor	347	○	■	○	○	■
Autonomous Emergency Brake	6DC	-	-	○	○	■
Ambient light	LCJ	-	○	○	○	■
Power Led Lighting (PLL)	LM6	-	○	□	□	■
Auto High Beam	LMS	-	-	○	○	○
3 <sup>rd</sup> rear headrest	511	○	○	○	○	○
Vehicle theft alarm	LSB	○	○	○	○	○
Blind spot detection	XAN	-	-	○	○	○
<b>AUDIO / TELEMATICS</b>						
Uconnect radio		■	-	-	-	-
Uconnect 7" Radio HD LIVE with Apple CarPlay® and Android Auto™ integration		○	○	○	○	○
Uconnect 7" Radio HD LIVE with Apple CarPlay® and Android Auto™ integration w\Nav	UGE	○	○	○	○	○
6 Speakers		-	■	■	■	■
2 USB port		-	■	■	■	■
Uconnect access via mobile		○	○	○	○	○
Digital Audio Broadcast (DAB)	RS9	■	■	■	■	■
Beats audio system (9 speakers)	4JF	-	○	○	○	○
Remote usb port (2 <sup>nd</sup> row)	RSX	○	○	○	○	○

□ = available in a pack   ■ = standard   ○ = optional   - = not available

<b>PACKS</b>		Urban	Lounge	City Cross	Cross	Sport
COMFORT (Front sliding armrest, Third rear headrest, Cargo floor, Hooks for net storage, Front & rear floor mats, Driver's seat with lumbar adjustment)	1XA	○	-	○	○	-
COMFORT LOUNGE (Third rear headrest, Cargo floor, Hooks for net storage, Front & rear floor mats, Driver's seat with lumbar adjustment)	2DR	-	○	-	-	-
COMFORT SPORT (Front sliding armrest, Third rear headrest, Cargo floor, Hooks for net storage, Sporty Front & rear floor mats, Driver's seat with lumbar adjustment)	1XB	-	-	-	-	○
ELECTRIC COMFORT CROSS (Front sliding armrest, Third rear headrest, Cargo floor, Hooks for net storage, Front & rear floor mats, Power driver seat 8W + 4W lumbar, Power front passenger seat 8W + 4W lumbar)	1XC	-	-	-	○	-
ELECTRIC COMFORT SPORT (Front sliding armrest, Third rear headrest, Cargo floor, Hooks for net storage, Sporty Front & rear floor mats, Power driver seat 8W + 4W lumbar, Power front passenger seat 8W + 4W lumbar)	1XD	-	-	-	-	○
FULL LED LOUNGE (Power led Lighting, Puddle lights, Ambient Light)	1N2	-	○	-	-	-
FULL LED CROSS (Power led Lighting, Puddle lights, LED fog lamps, Ambient Light)	1L1	-	-	○	○	-
X-TECH (Automatic A/C - 2 zones, Courtesy lights on sunvisors, External mirrors with automatic drive folding, Electrochromic internal rearview mirror, Passive entry + keyless go)	1XE	-	○	○	-	-
X-TECH CROSS (External mirrors with automatic drive folding, Electrochromic internal rearview mirror, Passive entry + keyless go)	1XF	-	-	-	○	-
X-TECH SPORT (External mirrors with automatic drive folding, Electrochromic internal rearview mirror, Passive entry + keyless go)	1XG	-	-	-	-	○
MAGIC EYE (Rear view camera, Front parking sensor)	1XH	-	-	○	-	○
MAGIC EYE & SAFETY (Rear view camera, Front parking sensor, Autonomous Emergency Brake, Auto high beam, Adaptive Cruise Control)	1XL	-	-	○	-	○
MAGIC EYE & SAFETY CROSS (Front parking sensor, Autonomous Emergency Brake, Auto high beam, Adaptive Cruise Control)	1XM	-	-	-	○	-
MAGIC EYE & SAFETY PLUS (Rear view camera, Front parking sensor, Autonomous Emergency Brake, Auto high beam, Blind spot detection, Adaptive Cruise Control)	1XJ	-	-	○	-	○
MAGIC EYE & SAFETY PLUS CROSS (Front parking Sensor, Autonomous Emergency Brake, Auto high beam, Blind spot detection, Adaptive Cruise Control)	1XK	-	-	-	○	-
STYLE (Privacy tinted glass, Full Chrome DLO, Door sills)	1XN	-	○	○	-	-
STYLE CROSS (Full Chrome DLO, Door sills)	1XP	-	-	-	○	-
WINTER (Heated front seats, Heated windshield)	6R7	○	○	○	○	○
BAD S (Alcantara® steering wheel inserts & cluster cover, Aluminium pedals cover + footrest, Puddle lights, Ambient light)	1XQ	-	-	-	-	○

■ = standard   ○ = optional   - = not available

## TECHNICAL SPECIFICATIONS

<b>500X</b>	<b>New FireFly Turbo 1,0 120 HP (B*)</b>	<b>New FireFly Turbo 1,3 150 HP DCT (B*)</b>		<b>1,3 MultiJet II 95 HP (B*)</b>	<b>1,6 MultiJet II 120 HP (B*)</b>	<b>1,6 MultiJet II 120 HP DCT (B*)</b>
N. cylinders, layout	3 in line	4 in line		4 in line	4 in line	4 in line
Bore x stroke (mm)	70x86.5	70x86.5		69.6x82	79.5x80.5	79.5x80.5
Displacement (cm <sup>3</sup> )	999	1332		1248	1598	1598
Compression ratio	10.5:1	10.5:1		16.8:1	16.5:1	16.5:1
Maximum power kW (HP) @ rpm	88 kW (120) @ 5750	110 kW (150) @ 5500		70 kW (95) @ 3750 rpm	88 kW (120) @ 3750 rpm	88kW (120) @ 3750 rpm
Maximum torque (Nm) @ rpm	190 Nm @ 1750	270 Nm @ 1850		200 Nm @ 1500 rpm	320 Nm @ 1750 rpm	320 Nm @ 1750 rpm
Supply	Gasoline, direct injection	Gasoline, direct injection		Diesel, Direct injection Common-Rail with MultiJet 2 system, turbocharger and intercooler	Diesel, Direct injection Common-Rail with MultiJet 2 system, turbocharger and intercooler	Diesel, Direct injection Common-Rail with MultiJet 2 system, turbocharger and intercooler
Timing type	Single Over Head Camshaft, 12 valves	Single Over Head Camshaft, 12 valves		Double Over Head Camshaft, 16 valves	Double Over Head Camshaft, 16 valves	Double Over Head Camshaft, 16 valves
Tappet control	Multi Air	Multi Air		Hydraulic	Hydraulic	Hydraulic
Ignition system	Electronic, static, integrated with injection	Electronic, static, integrated with injection		By Compression	By Compression	By Compression
Start&Stop system	yes	yes		yes	yes	yes

### DIMENSIONS

Number of seats	5	5		5	5	5
Number of doors	5	5		5	5	5
Lenght (Urban look) / (Cross look) / (Sport) (mm)	4264 / 4269 / 4264	4264 / 4269 / 4264		4264 / 4269 / 4264	4264 / 4269 / 4264	4264 / 4269 / 4264
Width (mm) / + ext. mirrors	1796 / 2025	1796 / 2025		1796 / 2025	1796 / 2025	1796 / 2025
Height without roof bars / with roof bars / (Sport)	1595 / 1603 / 1580	1595 / 1603 / 1580		1595 / 1603 / 1580	1595 / 1603 / 1580	1595 / 1603 / 1580
Wheelbase (mm)	2570	2570		2570	2570	2570
Front / Rear Track (mm)	1545 / 1545	1545 / 1545		1545 / 1545	1545 / 1545	1545 / 1545
Boot capacity (liters):						
Rear seat not folded down with tire kit	350	350		350	350	350
Rear seat folded down with tire kit	1000	1000		1000	1000	1000
Rear seat not folded down with spare wheel	245	245		245	245	245
Rear seat folded down with spare wheel	910	910		910	910	910

### ELECTRICAL SYSTEM

Battery capacity (Ah)	63	63		63	72	72
-----------------------	----	----	--	----	----	----

### TRANSMISSION

Drive	front wheel drive	front wheel drive		front wheel drive	front wheel drive	front wheel drive
Gearbox Family	6 speed manual	6 speed automatic dual clutch		5 speed manual	6 speed manual	6 speed automatic dual clutch
Final Drive	4.133	4.438		3.733	3.579	3.833

### WHEELS

Tire size 16"	215/60 R16	215/60 R16		215/60 R16	215/60 R16	215/60 R16
Wheel size 16"	6.5J x 16	6.5J x 16		6.5J x 16	6.5J x 16	6.5J x 16
Tire size 17"	215/55 R17	215/55 R17		215/55 R17	215/55 R17	215/55 R17
Wheel size 17"	7J x 17	7J x 17		7J x 17	7J x 17	7J x 17

\* The specification (B) indicates the value of CO<sub>2</sub> and fuel consumption determined on the basis of the measurement / correlation method referring to the NEDC2 cycle as per Regulation (EU) 2017/1152-1153. The CO<sub>2</sub> and fuel consumption values obtained according to applicable regulation are indicated in order to allow the comparison of vehicle data. The homologation values of CO<sub>2</sub> and fuel consumption may not reflect the actual values of CO<sub>2</sub> and fuel consumption, which depend on many factors related, by way of example but not limitation, to the driving style, the route, the weather and road conditions, the condition, use and equipment of the vehicle. The indicated value of CO<sub>2</sub> and fuel consumption refers to the versions

of the vehicle with the highest and the lowest values. Those values may change with the subsequent configuration depending on equipment selected and/or size of tires selected. The indicated values of CO<sub>2</sub> and fuel consumption are not definitive and may evolve as a result of changes in the production cycle; more up-to-date values will be available at the selected official dealer of the FCA network. In any case, the official values of CO<sub>2</sub> and fuel consumption of the vehicle purchased by the customer will be provided with the documents accompanying the vehicle. In cases where the values of CO<sub>2</sub> and fuel consumption are relevant for the purposes of calculating taxes and duties related to the vehicle, reference should be made to the applicable laws in each country.



## TECHNICAL SPECIFICATIONS

	New FireFly Turbo 1,0 120 HP (B*)	New FireFly Turbo 1,3 150 HP DCT (B*)		1,3 MultiJet II 95 HP (B*)	1,6 MultiJet II 120 HP (B*)	1,6 MultiJet II 120 HP DCT (B*)
<b>WHEELS</b>						
Tire size 18"	225/45 R18	225/45 R18		225/45 R18	225/45 R18	225/45 R18
Wheel size 18"	7J x 18	7J x 18		7J x 18	7J x 18	7J x 18
Tire size 19" (Urban look, Cross look)	205/50 R19	205/50 R19		205/50 R19	205/50 R19	205/50 R19
Wheel size 19" (Urban look, Cross look)	6.5J x 19	6.5J x 19		6.5J x 19	6.5J x 19	6.5J x 19
Tire size 19" (Sport)	225/40 R19	225/40 R19		225/40 R19	225/40 R19	225/40 R19
Wheel size 19" (Sport)	7.5J x 19	7.5J x 19		7.5J x 19	7.5J x 19	7.5J x 19
<b>STEERING</b>						
Steering box	Rack and pinion with Dual Drive power steering	Rack and pinion with Dual Drive power steering		Rack and pinion with Dual Drive power steering	Rack and pinion with Dual Drive power steering	Rack and pinion with Dual Drive power steering
Wall-to-wall turning circle (m)	11.5	11.5		11.5	11.5	11.5
Kerb-to-kerb turning circle (m)	11.05	11.05		11.05	11.05	11.05
<b>SUSPENSION</b>						
Front	Independent wheels with MacPherson layout	Independent wheels with MacPherson layout		Independent wheels with MacPherson layout	Independent wheels with MacPherson layout	Independent wheels with MacPherson layout
Rear	Independent wheels with MacPherson layout	Independent wheels with MacPherson layout		Independent wheels with MacPherson layout	Independent wheels with MacPherson layout	Independent wheels with MacPherson layout
<b>BRAKES</b>						
Front brakes	Vented disc	Vented disc		Vented disc	Vented disc	Vented disc
Rear brakes	solid disc	solid disc		solid disc	solid disc	solid disc
<b>CAPACITY - WEIGHTS</b>						
Fuel tank (liters)	48	48		55	55	55
Kerb weight (kg) WITHOUT driver (75 kg) - STANDARD A	1320	1320		1320	1320	1320
Max. towable weight (kg) non-braked	600	600		600	600	600
Max. towable weight (kg) braked	1000	1200		1000	1200	900
<b>PERFORMANCE</b>						
Top speed (km/h)	188	200		172	186	186
Acceleration: 0-100 km/h (s)	10.9	9.1		13.5	10.7	10.7
<b>FUEL ECONOMY NEDC2</b>						
Urban cycle consumption (l/100 km) - max/min	6.8/6.3	7.5/6.9		5.1/4.9	5.6/5.5	5.4
Extra-urban cycle consumption (l/100 km) - max/min	5.1/4.7	5.2/4.9		3.7/3.5	4.0/3.7	4.4/3.8
Combined cycle consumption (l/100 km) - max/min	5.8/5.4	5.7/5.6		4.3/4.0	4.7/4.3	4.7/4.4
<b>EMISSIONS</b>						
CO <sub>2</sub> emissions (g/km) (combined cycle) - max/min	132/122	138/128		111/106	123/115	124/116
<b>ECOLOGY LEVEL</b>						
Ecology Level	Euro 6d-TEMP	Euro 6d-TEMP		Euro 6d-TEMP	Euro 6d-TEMP	Euro 6d-TEMP

\* The specification (B) indicates the value of CO<sub>2</sub> and fuel consumption determined on the basis of the measurement / correlation method referring to the NEDC2 cycle as per Regulation (EU) 2017/1152-1153. The CO<sub>2</sub> and fuel consumption values obtained according to applicable regulation are indicated in order to allow the comparison of vehicle data. The homologation values of CO<sub>2</sub> and fuel consumption may not reflect the actual values of CO<sub>2</sub> and fuel consumption, which depend on many factors related, by way of example but not limitation, to the driving style, the route, the weather and road conditions, the condition, use and equipment of the vehicle. The indicated value of CO<sub>2</sub> and fuel consumption refers to the versions

of the vehicle with the highest and the lowest values. Those values may change with the subsequent configuration depending on equipment selected and/or size of tires selected. The indicated values of CO<sub>2</sub> and fuel consumption are not definitive and may evolve as a result of changes in the production cycle; more up-to-date values will be available at the selected official dealer of the FCA network. In any case, the official values of CO<sub>2</sub> and fuel consumption of the vehicle purchased by the customer will be provided with the documents accompanying the vehicle. In cases where the values of CO<sub>2</sub> and fuel consumption are relevant for the purposes of calculating taxes and duties related to the vehicle, reference should be made to the applicable laws in each country.

## CIAO FIAT CUSTOMER CARE

**CIAO FIAT**  
00 800 342 800 00

You can contact Fiat by calling the dedicated Toll Free Number 0080034280000\* reachable from most European countries. We are at your disposal to provide Road Assistance services, active 365 days a year, 24 hours a day. By contacting Fiat Customer Care you can also request info on our models, services, dealer network and, lastly, book a test drive on a vehicle of your choice. Fiat is at your disposal to satisfy every necessity or request linked to the use of your vehicle or our assistances services.

\*Remember to check the call costs with your phone provider when calling from abroad or mobile phones.

## WEB

**my Fiat**

Take care of your car in one click!  
Go to [my.fiat.com](http://my.fiat.com) and discover a world of dedicated services: safe maintenance, reminders and customized promotions.

## E-COMMERCE



Visit the Fiat online store on [store.fiat.com](http://store.fiat.com)

## FLEET & BUSINESS



FCA Fleet & Business is the division that responds to all business customer needs, including self-employees, small and medium enterprises and large companies.

Through our partners, we provide our business customers with dedicated financial products for leasing, contract hire or purchasing, and tailored after-sales services, such as scheduled service plans and warranty extensions.

[www.fcafleet-business.com](http://www.fcafleet-business.com)

## SERVICE CONTRACTS



**MAINTAIN YOUR 500X IN TIP TOP CONDITIONS WITH MOPAR® VEHICLE PROTECTION.**

Mopar® Vehicle Protection (MVP) offers a series of service contracts that are designed to give all our customers the pleasure of driving their vehicle without any hitches and concerns. Our product portfolio consists of a wide range of extended warranty and maintenance plans, with a flexible series of coverage tiers, built to accommodate your driving needs. All endorsed by Fiat. Subscribe to one of the MVP plans directly when purchasing 500X and include it (if desired) in the FCA Bank financial offer (on selected markets) or within subscription terms of each product. MVP guarantees that all service operations are performed with genuine parts by highly qualified and specialized technicians in authorized Fiat repair facilities, all over Europe. Choose the Service Contract that suits your driving habits best.

### MOPAR® FLEET & BUSINESS SOLUTIONS AND AFTERSALES SERVICES

DISCOVER THE DEDICATED AFTERSALES SERVICES DESIGNED TO SUPPORT YOU AND YOUR BUSINESS.

Mopar Fleet&Business services offers you perfect solutions that optimize your business activities and give you privileged services reducing you vehicles' downtime. Our set of services provides a range of special benefits to help with your vehicle needs, making servicing manageable for all our Fleet&Business customers, as well as making sure that you enjoy a consistent, helpful and worry-free experience whenever you're in contact with us.

#### PRE-PAID TAILORMADE SERVICE CONTRACTS

Subscribe to any of the tailored plans offered to Mopar Vehicle Protection, to help you maintain your business vehicle in tip-top condition.

#### PAY -PER-USE SERVICE CONTRACTS

Our customers stipulates a contract which determines lower rates and predefined discounts: a single monthly invoicing service for the entire fleet car parc.

Even more exclusive. Even more in sync with your lifestyle. The new 500X offers a huge range of original accessories and customisation options developed by Mopar®, so you can concentrate on simply being yourself. With the Fiat 500X, it's easy to follow your passions.



### REMOTE CONNECTION, CLOSER PROTECTION

Mopar® Connect is the Official feature set of connected services dedicated to Safety & Security and Vehicle Remote Control. It offers you instant support in case of emergency and an easy vehicle management through digital tools.

For further information, Mopar® experts at Fiat Authorized Dealerships and Workshops will always be at your service.

## FINANCE PACKAGES AND INSURANCE SERVICES — FCA BANK

FCA Bank is the bank dedicated to motorists specialized in the car financing industry.

Whether you are a private customer, professionals or run your own business, FCA BANK offers you the best and most flexible financial solutions to facilitate your forthcoming purchase of a Fiat so that you can drive it away. With FCA BANK you can combine your finance or leasing package with high value-added insurance services tailored to meet your requirements: fire and theft, collision and fully comprehensive insurance, extended warranty, and windscreen or vehicle security marking. Moreover, FCA Bank proposes long-term rental as ideal solution for companies, professionals and private individuals who want to benefit from a new vehicle without the burden of ownership and the duties that this involves. However you choose to experience mobility, FCA BANK can satisfy your needs with financial and leasing packages combined with exclusive services. Visit [www.fcabankgroup.com](http://www.fcabankgroup.com) for full details.