

2020 WRANGLER

Jeep[®]





WHEN YOU'RE POWERED BY THIS KIND OF AUTHENTIC JEEP® BRAND CAPABILITY, YOU'RE GIVEN THE CONFIDENCE TO TRAVEL WHEREVER YOUR DREAMS WANT TO GO. JEEP WRANGLER IS PURPOSEFULLY DESIGNED TO TACKLE THE ELEMENTS AND WIN EVERY TIME. WRANGLER IS RECOGNIZED THE WORLD OVER AS A TRUE FREEDOM MACHINE. IT'S AS ONE-OF-A-KIND AS THE DESTINATIONS YOU'RE OUTFITTED TO DISCOVER AND EXPLORE.

SPIRITED ADVENTURE FULFILLED

*A note about this brochure: all disclosures can be found on the last page.

CAPABILITY

- Command-Trac® 4x4 System
- Available Selec-Trac® Full-Time 4x4 System
- Available Rock-Trac® 4x4 System (standard on Rubicon®)
- Available Tru-Lok® locking differentials
 - Dana® axles
 - Available rock rails
 - Available steel bumpers
 - Skid plates
- Available Trailer Tow and HD Electrical Group

OPEN AIR

- Sunrider® Soft Top
- Available Freedom Top® Modular Hardtop
 - Available Dual Top Group
- Available Sky One-Touch® Power Top
 - Removable² doors
 - Available fold-down windshield²
 - Tool kit for top/door removal²

TECHNOLOGY

- Available Alpine® Premium Sound System
 - Push-button start
- Available Remote Start System³
- Available Keyless Enter 'n Go™
- Available LED Lighting Group
- ParkView® Rear Back-Up Camera⁴
 - Sentry Key® anti-theft engine immobilizer
- Available 7-inch full-color Driver Information Display

CONNECTIVITY

- Available Uconnect® 4C NAV with 8.4-inch touchscreen
 - Apple CarPlay®⁵
 - Siri® Eyes Free⁶
 - Android Auto™⁷
- Available SiriusXM® Radio⁸
- Available SiriusXM Guardian™⁹
- Available SiriusXM Traffic Plus⁸
- Available SiriusXM Travel Link⁸

FEATURE MENU



RETURN TO THIS MENU
BY CLICKING ON
THIS ICON



INTERIOR

- Available heated steering wheel and front seats
- Available leather-trimmed seats
- Available leather-wrapped steering wheel
 - Cruise control
- Available Dual-Zone Automatic Temperature Control
- Available four pre-wired auxiliary switches
 - Available power, heated mirrors
 - Auto-dimming rearview mirror

DRIVETRAIN

- 3.6L Pentastar® V6 engine with Engine Stop/Start (ESS) technology
- Available 3.6L Pentastar V6 engine with eTorque mild-hybrid technology
 - Available 2.0L Turbo I-4 engine with ESS technology
 - Available 2.0L Turbo I-4 engine with eTorque mild-hybrid technology
- Available 8-speed automatic transmission
 - 6-speed manual transmission

UTILITY

- Available Trail Rail™ Cargo Management System
- Available Modular Seatback Jeep® Utility Grid
- Rear in-floor storage bin
 - Lockable glove box
- Lockable center console
- Wash-out interior with removable carpet

SAFETY & SECURITY

- Electronic Stability Control¹⁰
- Available Blind Spot Monitoring¹¹ and Rear Cross-Path Detection⁴
- Available ParkSense® Rear Park Assist⁴
 - Hill Start Assist
- Advanced multistage driver and front-passenger air bags¹²
- Supplemental front-seat-mounted side air bags¹²



OFF-ROAD PAGES Access real-time performance data like suspension travel or keep an eye on your tilt-and-pitch. In-depth vehicle diagnostics, including wheel turn, articulation and transmission temperature, all help to provide an optimized experience. Available.

Rubicon® with McKinley Leather-trimmed interior in Black with embroidered Rubicon logo, Rubicon Red accent stitching and Redical mid-bolster



ROOF WITH A VIEW

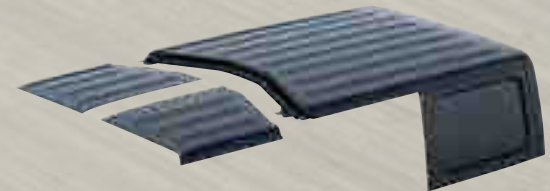
JEEP® WRANGLER GIVES YOU MULTIPLE WAYS TO TAKE IN MORE OF THE WORLD. THREE UNIQUE TOP STYLES ALLOW YOU TO EXPERIENCE THE KIND OF OPEN-AIR FREEDOM THAT ONLY WRANGLER CAN DELIVER. SO DECIDE HOW YOU WANT TO GET YOUR TOP ON, THEN GET READY TO TAKE IT RIGHT OFF.²



Sahara® Unlimited in Billet Silver Metallic



SUNRIDER® SOFT TOP Standard on all Wrangler models, with an easy-to-use zipperless design. Its simple operation allows the top to glide open with the help of spring-loaded support bars. Crafted from heavy-duty, waterproof cloth material and available in Black or Tan.



FREEDOM TOP® MODULAR HARDTOP This three-piece hardtop is light and easy to remove.² For a full open-air experience, you can remove² all three sections or let in the sun by just removing² the two front panels. Available.



SKY ONE-TOUCH® POWER TOP The first-ever power top on a Wrangler model invites in the fresh air with the push of a button. Open up even more with the easy-to-remove² rear glass quarter panels. Available on Sahara® and Rubicon® Wrangler Unlimited models.



SUNRIDER® SOFT TOP

TAKE-OUT WINDOWS Go for a completely open top-down experience. Removing² the side and rear windows creates a full-length covering of sunshine that's perfect for feasting on fresh air.

A smart spring-assist system makes the soft top easier than ever to fully or partially open. Zipperless removable² windows complete the legendary wind-in-your-hair Wrangler experience.

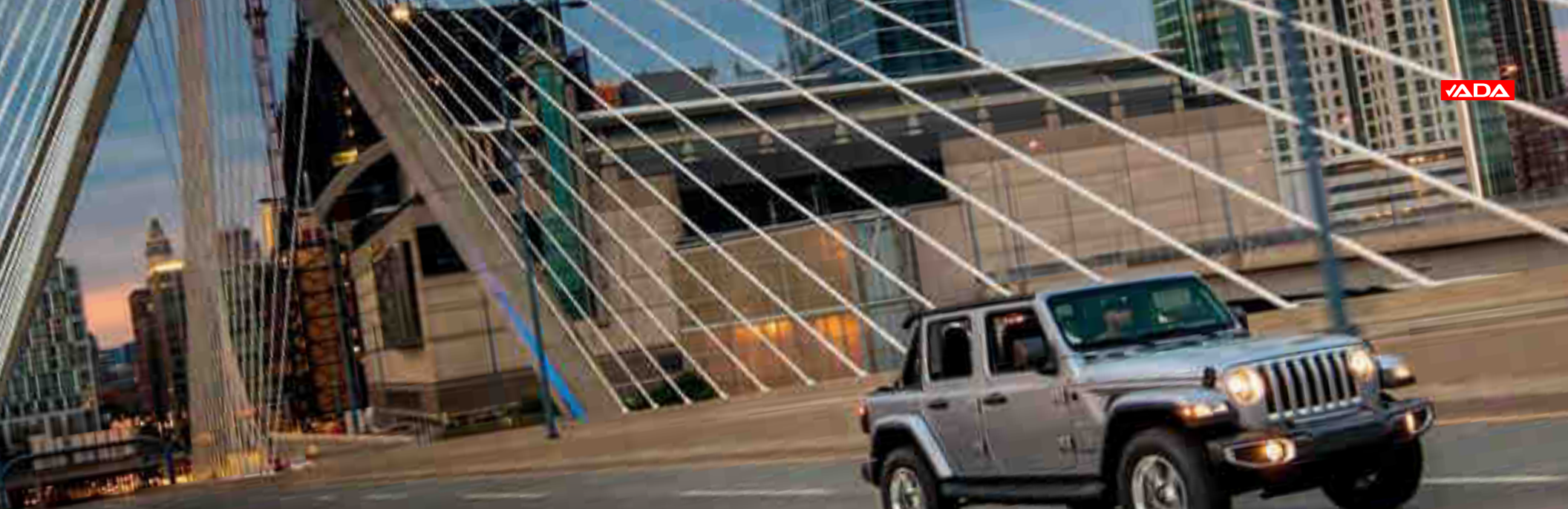


Rubicon® in Firecracker Red

FLIP BACK AND RELAX Better fabric management and an easier-to-use retraction handle let you bring in fresh air faster than ever with minimal effort.

GET A REALLY NICE TAN In addition to Black, the new Sunrider® Soft Top is now available in an attractive Tan, giving you a second choice of top color.





PARTIAL TO POWER



285
horsepower

260
lb-ft of torque

3.6L PENTASTAR® V6 ENGINE Known for its proven performance and smooth operation, the Pentastar engine's increased efficiencies are helped by the addition of Engine Stop/Start (ESS) technology while remaining a brawny performer, boasting 285 horsepower and 260 lb-ft of torque. Available with a 6-speed manual or 8-speed automatic transmission.



270
horsepower

295
lb-ft of torque

2.0L TURBO I-4 ENGINE Delivers impressive performance, yet sips fuel as an I-4 should. This remarkable engine offers smart energy-generating functions, including available ESS, electric power assist, extended fuel shutoff, transmission shift management, intelligent battery charging and regenerative braking. Direct injection boosts power while reducing emissions, and eTorque technology provides a smooth engine stop/start experience, along with electric torque assistance. With its standard match to the 8-speed transmission, you'll enjoy strong takeoffs and smooth highway coasting.

ESS Helps reduce CO₂ emissions and improve efficiency by using a dual-battery system and sophisticated controls to reduce fuel flow and turn off the engine when the vehicle brakes to a stop. When the brake pedal is released, the engine seamlessly restarts and the transmission engages. Standard on all engines when paired with the available automatic transmission.

eTORQUE TECHNOLOGY By including this efficient mild-hybrid feature, the 2.0L engine offers fuel-saving/energy-generating functions. These include ESS technology, electric power assist, extended fuel shutoff, transmission shift management, intelligent battery charging and regenerative braking. Even more, a Belt Starter Generator (BSG) provides welcome efficiencies and smooth launch performance for driver comfort. Available.



8-SPEED AUTOMATIC TRANSMISSION

With smooth, quick efficiency, this transmission provides additional gears with no gain in weight, enhanced acceleration with reduced fuel consumption and increased torque with added strength to pull. Available.



6-SPEED MANUAL TRANSMISSION

For those who prefer to really put themselves into every shift, this one's for you. It hands you low 1st and Reverse gears, which are great for off-roading, with a vent tube that can be moved to help safely traverse higher water fording¹³ levels. It comes standard, matched to either a Command-Trac[®] 4WD system on Sport and Sahara[®] or paired with the Rock-Trac[®] 4WD system on Rubicon[®].



DON'T GET PASSED ON THE PASS

PULLING POWER Wrangler Unlimited can confidently tow up to 3,500 lb when properly equipped with the available Trailer Tow and HD Electrical Group. Trailer Sway Control¹⁰ helps keep you and the toys you tow safely on course. Wrangler is also ideal for towing behind an RV, so you can bring open-air off-road capability wherever you go.



Sahara[®] Unlimited in Granite Crystal Metallic



SAFETY & SECURITY



BLIND SPOT MONITORING¹¹ AND REAR CROSS-PATH DETECTION⁴ Maintain a safe perimeter with the help of these sensor systems. Chimes and illuminated icons notify you when side or rear blind spots are encroached. Available.

PARKSENSE[®] REAR PARK ASSIST SYSTEM⁴
Works in tandem with the ParkView[®] Rear Back-Up Camera⁴ to display previously hidden objects, bringing them to your attention on-screen and with an audible warning so you have time to react. At speeds below 4 mph, the system will automatically bring the vehicle to a stop if an object is detected. Available.

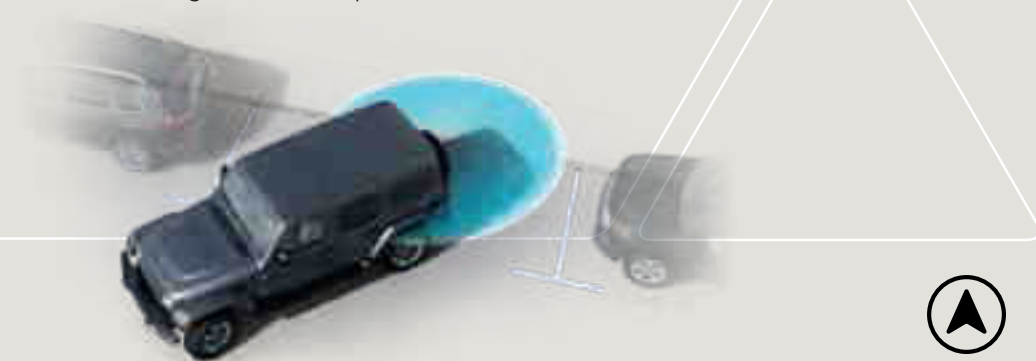
ELECTRONIC STABILITY CONTROL (ESC)¹⁰
A vehicle-wide network of safety sensors helps maintain vehicle control, providing instant aid should it detect you're veering off your intended path. ESC¹⁰ coordinates Electronic Roll Mitigation (ERM), Antilock Brake System (ABS) and Brake Assist, All-Speed Traction Control and available Trailer Sway Control (TSC)¹⁰ sending them into action when needed. Standard.

ENHANCED ACCIDENT RESPONSE SYSTEM (EARS) This system makes it easier for emergency personnel to see and reach occupants in the event of an accident, turning on interior lighting, flashing hazard lamps and unlocking power doors after air bag¹² deployment. Standard.

HILL START ASSIST (HSA) AND HILL DESCENT CONTROL (HDC) HSA works to prevent Wrangler from rolling when starting on an uphill gradient. HDC is packaged with the 8-speed automatic transmission, helping Wrangler navigate steep declines at a steady speed. Available.

ADVANCED SAFETY GROUP This complete package uses active sensors to help you stay aware of your surroundings. It includes Auto High-Beam Headlamp Control (must have 8.4 NAV), Full-Speed Forward Collision Warning Plus¹⁴ Enhanced Adaptive Cruise Control²⁵ Blind Spot Monitoring¹¹ and Rear Cross-Path Detection⁴ ParkSense[®] Rear Park Assist System⁴ and bright LED taillamps. Available.

WHEN IT COMES TO YOUR WELL-BEING ON THE ROAD, JEEP[®] WRANGLER IS READY AND WILLING TO STAND AS A CONSTANT GUARDIAN. WRANGLER ENVELOPS YOU WITH MORE THAN 75 STANDARD AND AVAILABLE SAFETY & SECURITY FEATURES. SENSORS AND CAMERAS KEEP WATCH AROUND YOUR PERIMETER FOR COMPLETE PEACE OF MIND.



A SOLID FOUNDATION



BODY STRENGTH The exceptionally solid safety cage consists of high-strength steel paired with lightweight aluminum, making Wrangler lighter in weight while still providing a very strong chassis. Standard.

ADVANCED MULTISTAGE AIR BAGS¹² In the unfortunate occurrence of a collision, these air bags¹² deploy nearly instantaneously, providing occupant protection that's matched to crash severity. Active vents exhaust air bags¹² at appropriate rates, depending on impact. Standard.

SUPPLEMENTAL FRONT-SEAT-MOUNTED SIDE AIR BAGS¹² Deploying from the outboard side of each front seat, these air bags¹² enhance the protection of the driver and front-seat passenger in certain impacts. Standard.

ULTRASONIC AND ANTI-TILT SECURITY SYSTEM²⁶ The alarm is activated by virtually any unauthorized movement, such as wheel removal or towing; illegal opening of a door, hood or swing gate; ignition start; cutting of battery leads; or motion inside the cabin. Available.

SENTRY KEY[®] ENGINE IMMOBILIZER A unique, embedded key code matched only to your vehicle helps keep your Wrangler safe where you parked it. Standard.



RUBICON®



Rubicon® Unlimited in Punk'n Metallic



WRANGLER RUBICON® This mighty trail master arrives fully equipped with all of the proven features that make it worthy of tackling the world's wildest terrain. Standard features include: 33-inch All-Terrain tires, locking front and rear Dana® 44 heavy-duty axles, electronic sway bar disconnect, Rock-Trac® 4:1 transfer case with a crawl ratio of up to 84:1, steel off-road rock rails and skid plates, and a vented power dome hood.

RUBICON®

STANDARD

- 3.6L Pentastar® V6 engine with Engine Stop/Start (ESS) technology, 6-speed manual transmission and 4.10 axle ratio
- Rock-Trac® 4x4 system
- 3rd-generation Dana® 44 heavy-duty axles with Tru-Lok® front and rear locking differentials
- Performance suspension system
- High-clearance front fender flares
- Rock rails
- Vented hood with Rubicon® decal
- Front and rear tow hooks in Red
- Unique front and rear bumpers with Gray bezels
- Gray grille inserts
- Fuel-filler door
- Skid plates for fuel tank and transfer case
- Sway bar disconnect
- Automatic halogen headlamps and fog lamps
- Sunrider® Soft Top in Black vinyl with deep-tint windows
- Full-framed removable² doors
- 17-inch aluminum wheels with Mid-Gloss Black pockets
- 33-inch off-road tires with full-size spare tire
- Cloth seats in Black with Rubicon logo, Red accent stitching and either Redical Anodized or Silver Platinum dash mid-panel
- Push-button start
- Cruise control
- Leather-wrapped steering wheel
- Power windows and locks with keyless entry
- Power, heated mirrors
- Universal garage door opener
- 7-inch full-color Driver Information Display
- Uconnect® 4 with 7-inch touchscreen and SiriusXM® Radio⁸
- Apple CarPlay⁸⁵ integration
- Android Auto™ compatibility
- Dual-Zone Automatic Temperature Control

- 8-speaker sound system with overhead sound bar
- ParkView® Rear Back-Up Camera⁴
- Electronic Stability Control (ESC)¹⁰ and Trailer Sway Control (TSC)¹⁰
- Hill Start Assist (HSA) and Electronic Roll Mitigation (ERM)
- Advanced multistage driver and front-passenger air bags¹²
- Supplemental front-seat-mounted side air bags¹²
- Tire Pressure Monitoring Display
- Sentry Key® anti-theft engine immobilizer
- 12-volt outlets and 115-volt auxiliary power outlet
- Modular Seatback Jeep® Utility Grid System
- Cargo anchors with Trail Rail™-ready inserts
- Full center console and rear in-floor storage bin
- Torx® tool kit for top and door removal²
- Wash-out interior with removable carpet
- Fold-and-Tumble removable² rear bench seat (2-door only) with fold-down headrests for improved visibility

AVAILABLE

- 2.0L Turbo I-4 engine with ESS
- 8-speed automatic transmission
- 17-inch aluminum Mid-Gloss Black wheels
- Body-color fender flares
- Leather-trimmed seats with Rubicon Red embroidered Rubicon logo and accent stitching, and Redical Anodized dash mid-panel
- Sky One-Touch® Power Top with 1-touch operation and removable² rear quarter panels
- Freedom Top® Black 3-piece modular hardtop with rear wiper/washer, rear defroster and Freedom Panel storage bag
- Mopar® Hardtop Headliner
- Premium Black or Heritage Tan Sunrider Soft Top
- Keyless Enter 'n Go™ proximity entry
- Remote Start System³ (automatic transmission only)
- Alpine® Premium Sound System with 9 speakers, including an all-weather subwoofer, 552-watt amplifier and 220-amp alternator

- Trail Rail Cargo Management System
- Mopar All-Weather Floor Mats
- Engine block heater
- Jeep Trail Rated® Kit (tow strap, gloves, D-ring and bag)

STEEL BUMPER GROUP: Winch-capable front steel bumper with integrated fog lamps, removable² end caps and steel rear bumper (must have LED Lighting Group)

DUAL TOP GROUP: Black Freedom Top 3-piece hardtop and premium Black Sunrider Soft Top (Wrangler Unlimited only)

COLD WEATHER GROUP: Heated steering wheel, heated front seats and Remote Start System³ (automatic transmission only)

ELECTRONIC INFOTAINMENT GROUP: Uconnect 4C NAV with 8.4-inch touchscreen, GPS Navigation, Bluetooth® Apple CarPlay³; Android Auto³; Siri® Eyes Free⁶; AM/FM radio, HD radio, SiriusXM Radio⁸ (1-year trial subscription), SiriusXM Guardian™ (1-year trial subscription), SiriusXM Traffic Plus⁸ (5-year trial subscription), SiriusXM Travel Link⁸ (5-year trial subscription), audio input jack, USB port, Alpine Premium Sound System and auto-dimming rearview mirror

LED LIGHTING GROUP: Includes front LED fog lamps, LED reflector headlamps, LED taillamps and daylight running lamps (DRLs)

TRAILER TOW AND HD ELECTRICAL GROUP: Class II hitch receiver, 4- and 7-pin wiring harness, 240-amp alternator, 700-amp maintenance-free battery, and 4 pre-wired auxiliary switches

SAFETY GROUP: Blind Spot Monitoring¹¹ and Rear Cross-Path Detection⁴; ParkSense® Rear Park Assist System⁴; and LED taillamps

ADVANCED SAFETY GROUP: Includes Full-Speed Forward Collision Warning Plus¹⁴; Adaptive Cruise Control with Stop¹⁵; and Auto High-Beam Headlamp Control (must have Uconnect 4C NAV)

SMOKER'S GROUP: Removable ashtray and lighter

INTERIORS

- 1) Maddox Embossed Cloth in Black with embroidered Rubicon logo, Rubicon Red accent stitching, and either painted Redical or Silver Platinum mid-bolster, depending on exterior paint color (standard)
- 2) McKinley Leather-trimmed in Black with embroidered Rubicon logo, Rubicon Red accent stitching, and either painted Redical or Silver Platinum mid-bolster, depending on exterior paint color (available)
- 3) McKinley Leather-trimmed in Dark Saddle with embroidered Rubicon logo, Light Tungsten accent stitching and painted Silver Platinum mid-bolster (available)



WHEELS

- 1) 17-inch polished aluminum with Mid-Gloss Black pockets (standard)
- 2) 17-inch aluminum Mid-Gloss Black with polished lip (available)



Rubicon® Unlimited in Billet Silver Metallic with optional Sky One-Touch® Power Top, leather-trimmed seats, body-color fender flares and Steel Bumper Group

IF YOU CAN DREAM IT,
YOU CAN BUILD IT



SHOWN WITH AUTHENTIC JEEP, BRAND VEHICLE ACCESSORIES BY MOPAR®, INCLUDING MESH SUN BONNET, RUBICON® HOOD PACKAGE, A-PILLAR LIGHT MOUNTING BRACKET AND 5-INCH OFF-ROAD²⁷ LED LIGHT KIT, WINCH GUARD LIGHT MOUNTING BRACKETS AND 7-INCH OFF-ROAD²⁷ LED LIGHT KIT, SATIN BLACK GRILLE, WINCH GUARD HOOP, RUBICON STEEL STUBBY BUMPER, 2-INCH LIFT KIT WITH FOX® SHOCKS, RUBICON FENDER FLARES, JEEP PERFORMANCE PARTS ROCK RAILS, 17-INCH BEADLOCK WHEELS AND BLACK FUEL-FILLER DOOR.



Mopar® and the Jeep® Brand have forged a radical partnership, resulting in a portfolio of factory-engineered products specifically designed to enhance the off-road performance of 4WD Jeep Brand vehicles. From bumpers to axles, from suspension to the impressive LED Off-Road Lights, these extreme parts have been crafted to meet the needs of off-road enthusiasts who demand the very best in capability and style. In addition, Mopar offers a wide variety of Authentic Accessories, outfitted to reflect your personality and lifestyle. Learn more at mopar.com

COUNTERCLOCKWISE FROM TOP: A-PILLAR LIGHT MOUNTING BRACKET AND 5-INCH LED OFF-ROAD²⁷ LIGHT KIT, FRONT-END COVER AND HOOD COVER, FRONT RUBICON® CRATE AXLE, AND BLACK TUBULAR SIDE STEPS